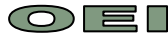


CHANGE NOTICE



P.O. Box 8400
Green Bay, WI 54308-8400
(920) 468-2775

Change Notice No. 165

Implemented By: Kevin Scott

Notification By: Jeff Oettinger

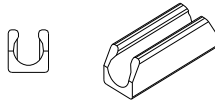
Date: 10/14/10

Effective: 10/14/10

ECN: # 12020

Component Product Title: **PIPER** (Maestro) frame and glide change.

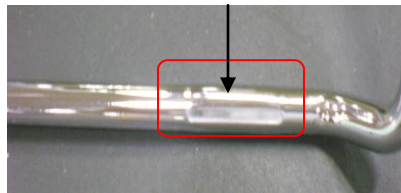
Description of Change:



Old Notch Style Frame



Old Ganging Style Frame



NEW Notch Style

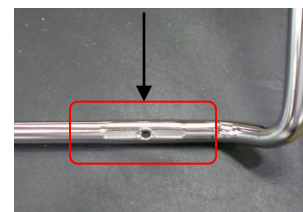


New Glide Notch Style



PART CHANGES

SS Glide	Old 06.0437	A. New 46.3283.X
Rubber Glide	Old 10.0110	B. New 46.3281.X
Poly Glide	Old 53.1123	C. New 46.3282.X
Ganging Glide	NO Change	
Frame Part numbers stay the same. (New Notch)		
85.4832.XXX	Glide/No Glide Frame	
85.4833.G.XXX	Ganging Frame	



New Ganging Style Frame
Use Current Glide and Screw

New style frame covers two frames in one. The new frame can be ordered for No Glide or With Glide. The new style notch will accommodate end user sites who ordered as a no glide and now want to add a glide in the field.

Action Required:

- Customers who order by components change to new parts in their system and on PO's to OEI.
- Customer who order by model numbers, you will receive new parts in BOM.
- Customers who have inventories of old style glides can use the glides on the Dakota line.

Customer Notification: CO,DE,ID,IA,KS,KY,MD,MI,MS,NJ,WI,OK,IN,NV,UT,VA

PLEASE DISTRIBUTE TO ALL RELEVANT PERSONEL